

PART OF THE NE. 1/4, OF SECTION 23, T.5N., R.1W., S.L.B. & M.

813

# MOOSE MOUNTAIN SUBDIVISION

IN WEBER COUNTY

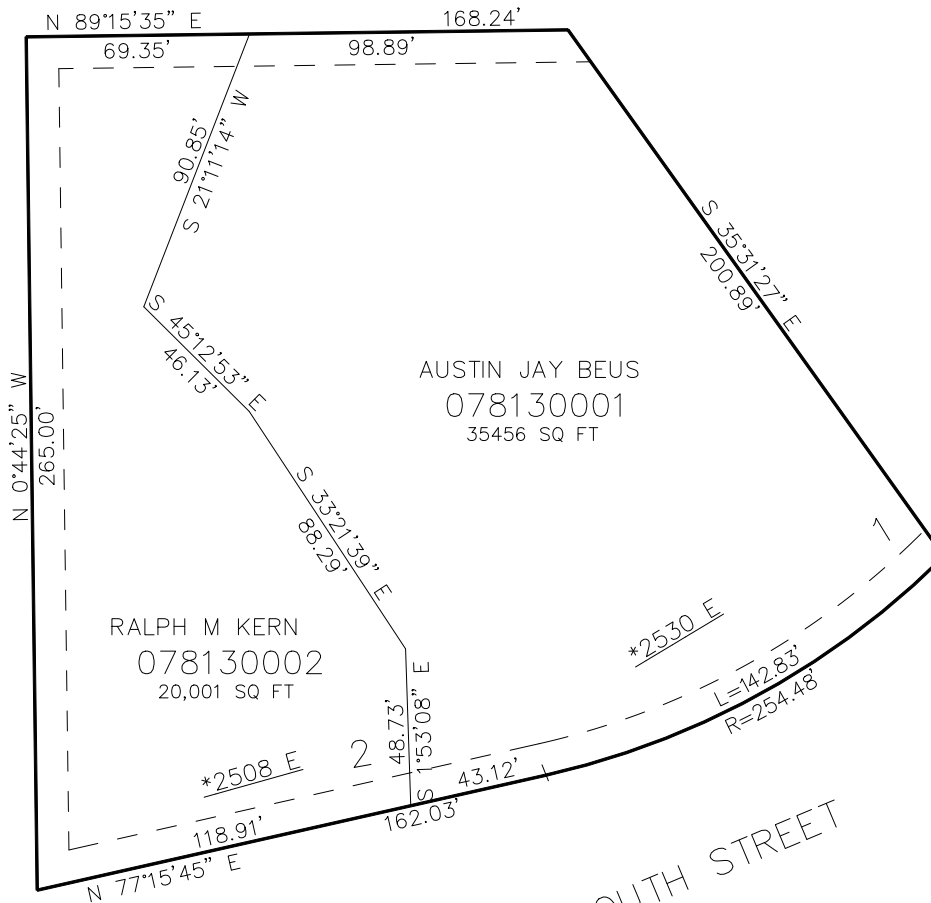
TAXING UNIT: 159

SCALE 1" = 30'

SEE PAGE 191

SEE PAGE 731

SEE PAGE 746



5950 SOUTH STREET

\*ADDRESS AFFIDAVIT E#3187979-80

10' UTILITY & DRAINAGE EASEMENTS EACH  
SIDE OF PROPERTY LINES AS INDICATED  
BY DASHED LINES EXCEPT AS OTHERWISE  
SHOWN.

SEE PAGE 731

FOR COMPLETE ENC DATA SEE  
ORIGINAL DEDICATION PLAT IN  
BOOK 89, PAGE 74 OF RECORDS.